

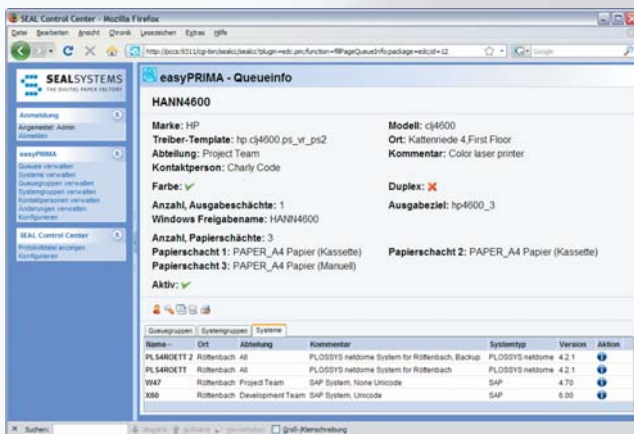


FACTSHEET

easyPRIMA

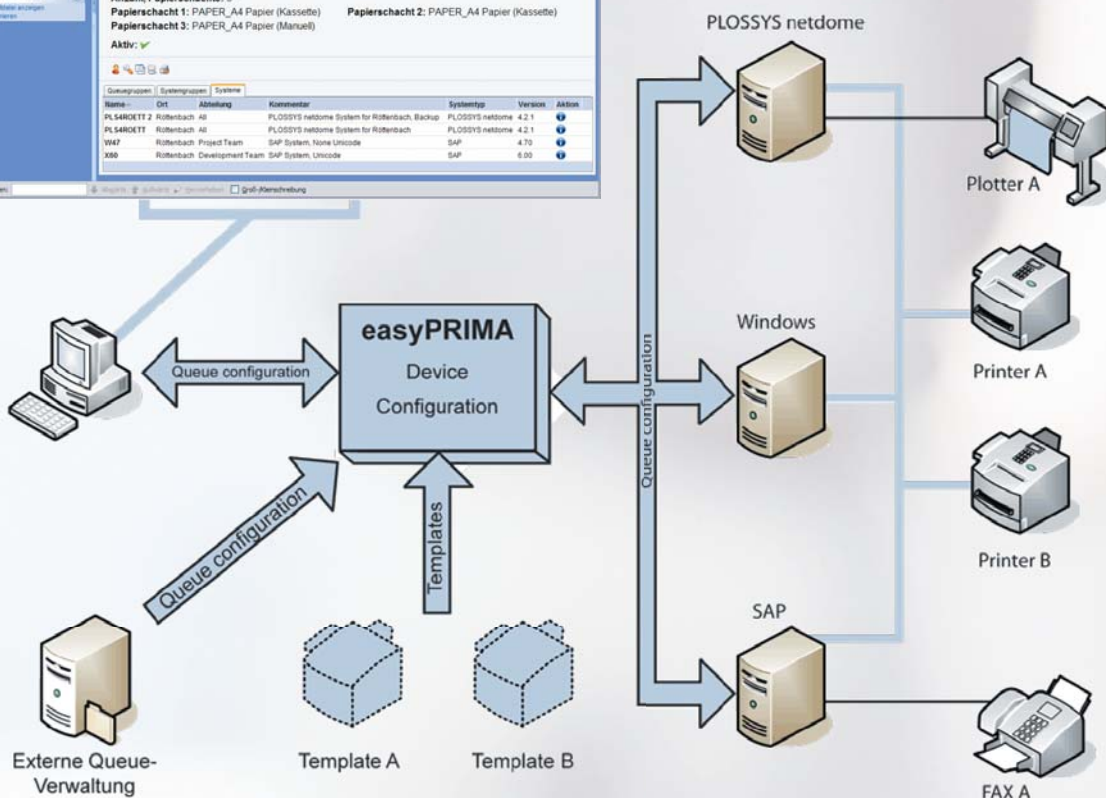
PRINTER MANAGEMENT EFFICIENT ADMINISTRATION OF PRINTERS

// For many companies the maintenance and administration of printers means **expenditure of time** and therefore **high costs**. In many cases new output devices must be simultaneously supported in several output and spool systems (SAP®, Windows®, and PLOSSYS® netdome). Especially for SAP customers this can be a problem, when several SAP systems are used. If there are several PLOSSYS and Windows print servers installed because of performance and safety aspects, then the efforts can explode and the synchronization of data can hardly be no longer achieved. Exactly here easyPRIMA can help.



WHO NEEDS EASYPRIMA?

All system administrators, who have to centrally configure and administer extensive printer configurations on several systems.



easyPRIMA

With easyPRIMA, printer information from all important stock systems can be taken. This data is kept **system independent** in a centralized database and can be distributed to all connected output systems at any time. New printers can be easily installed and distributed **without any specific know-how** about the particular output system. An installed printer can be deleted in all connected systems. The **easy-to-use web-based environment** can be used enterprise-wide by any person, who is responsible for installing or configuring of printers.

::: THE BENEFIT

The efforts for printer administration can be reduced significantly with easyPRIMA. With the intuitional web-based interface the local system administrators can install new output devices or delete existing ones cross-system wide. The **synchronization** of the different output systems is **ensured at any time**. The installation of new output devices is **faster** and **more economical**. By using an open system architecture new output systems can be integrated at any time. Together with the device independence of this solution a **quick return of invest** is achieved.

::: THE ADVANTAGES

easyPRIMA enables the definition of new printers simultaneously in several output systems. The **efforts** for printer administration in these systems is **significantly reduced** combined with a high **economic benefit**. A high user acceptance is achieved by the considerable faster and more efficient system support. Because all devices are **automatically installed** on all output servers and their backup systems, a high system availability is guaranteed.

::: EASY IMPORT OF PRINTER INFORMATION FROM OTHER SYSTEMS

- Import interface for PLOSSYS netdome and gXnetplot
- Import interface for SAP
- Import interface for MS Windows Print server
- Third party systems can be connected any time with CSV-based interfaces
- Automatic rule-based parameter adaption at import
- Automatic configuration amendment from predefined templates
- Storage in system neutral configuration format



::: INTUITIVE HANDLING

- Simply to use web-based interface
- Centralized configuration
- Search, view, add, copy, change, and delete of devices in several systems from only one environment
- User authorization guarantees, that only data is visible and editable, which is relevant for each single user
- Automatic logging of all changes
- Configuration rollback to previous versions is possible

::: EASY DISTRIBUTION

- Automatic configuration distributions to all connected systems (for each change or once a day)
- Configuration distribution on demand (for Output Manager version 4.2.1 or higher)
- Rule-based parameter adaption for creating systems specific data from systems neutral data at upload
- Multiserver support
- Definition of printers in PLOSSYS netdome und gXnetplot
- Definition of printers in SAP – with or without SEAL Systems output management
- Definition of printers for MS Windows print server, if PLOSSYS netdome or gXnetplot is used